



UNITED STATES

DEPARTMENT OF TRANSPORTATION

Office of Intelligence, Security, and Emergency Response (S-60)

# USDOT National Response Program

*2018 FHWA/Island/Territories Meeting*

*Lakewood, CO*

*Leah Russell, RETREP, Region 4*

04/04/2018



# Emergency Support Functions (ESFs)

- **ESF #1: Transportation**
  - Department of Transportation
- **ESF #2: Communications**
  - Department of Homeland Security (DHS)
- **ESF #3: Public Works and Engineering**
  - Department of Defense/U.S. Army Corps of Engineers\*
- **ESF #4: Firefighting**
  - Department of Agriculture/Forest Service
- **ESF #5: Emergency Management**
  - DHS/Federal Emergency Management Agency (FEMA)\*
- **ESF #6: Mass Care, Emergency Assistance Housing, and Human Services**
  - DHS/FEMA, American Red Cross
- **ESF #7: Logistics Management and Resource Support**
  - DHS/FEMA, General Services Administration\*
- **ESF #8: Public Health and Medical Services**
  - Department of Health and Human Services\*
- **ESF #9: Search and Rescue**
  - DHS/FEMA\*
- **ESF #10: Oil and Hazardous Materials Response**
  - Environmental Protection Agency\*
- **ESF #11: Agriculture and Natural Resources**
  - U.S. Department of Agriculture
- **ESF #12: Energy**
  - Department of Energy\*
- **ESF #13: Public Safety and Security**
  - Department of Justice
- ***ESF #14: Superseded by NDRF***
- **ESF #15: External Affairs**
  - DHS

\*Indicates DOT as support agency



# Emergency Support Function 1

- Monitor and report status of and damage to the transportation system and infrastructure
- Identify temporary alternative transportation solutions that can be implemented by others
- Perform activities conducted under the direct authority of DOT elements
- Coordinate the restoration and recovery of the transportation system and infrastructure
- Coordinate and support prevention, preparedness, response, recovery, and mitigation activities among transportation stakeholders



# ESF-1: Regional Personnel

**DOT HQ, Washington, DC**  
**NRPM: Mike Callahan)**  
**Operations Planner: Jorge Reyes**

**Region X, Seattle**  
**RETCO: David Suomi**  
**RETREP: David Lutes**

**Region VIII, Denver**  
**RETCO: Rick Suarez**  
**RETREP: Ron Williams**

**Region V, Chicago**  
**RETCO: John Rohlf**  
**RETREP: Jeff McSpaden**

**Region I, Boston**  
**RETCO: Mary Beth Mello**  
**RETREP: Terry Sheehan**

**Region AK, Anchorage**  
**RETCO: David Suomi**  
**RETREP: Cindy Sacks**

**Region IX, Oakland, CA**  
**RETCO: David Suomi**  
**RETREP-N: Mike Matthews**  
**RETREP-S: Kristan Hericks**

**Region II, New York**  
**RETCO: Marie**  
**Kennington-Gardner**  
**RETREP: Jim Robinson**

**Region III, Philadelphia**  
**RETCO: Pearlis Johnson**  
**RETREP: Lisa Brennan**

**Region IV, Atlanta**  
**RETCO: Pearlis Johnson**  
**RETREP: Leah Russell**

**Region VI, Fort Worth**  
**RETCO: Robert Lowe**  
**RETREP: Gary Barber**

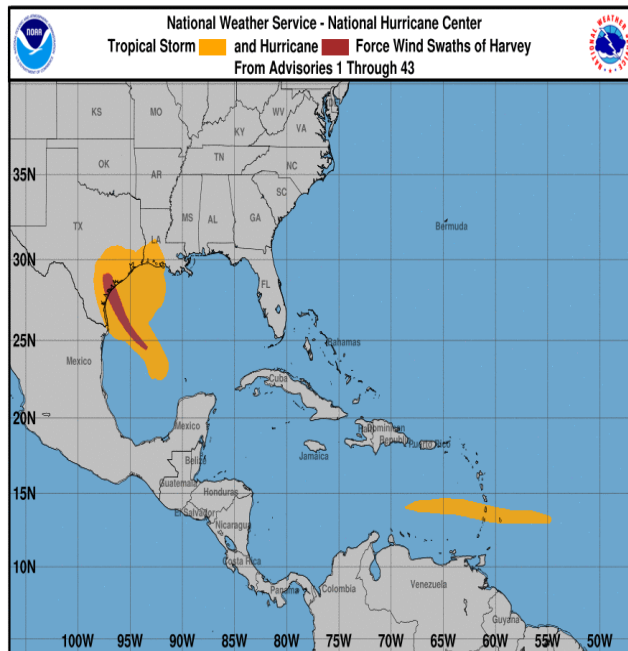
Northern Mariana Islands  
 Hawaii  
 Guam  
 American Samoa

Puerto Rico  
 U.S. Virgin Islands

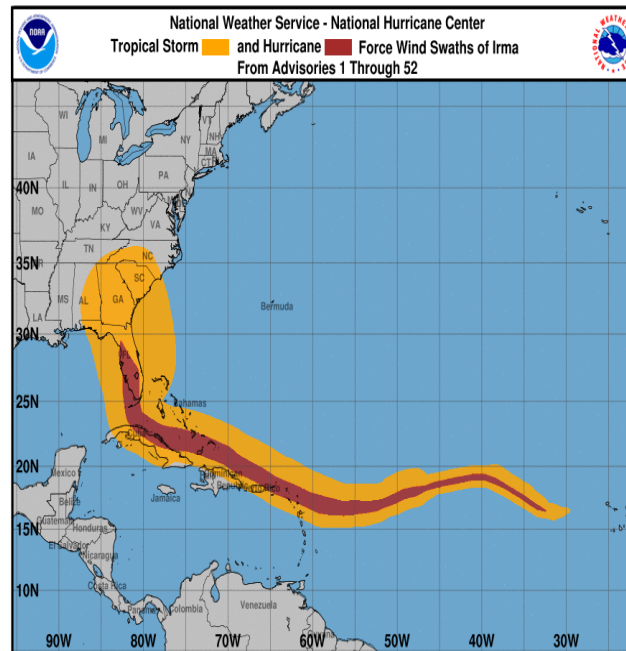




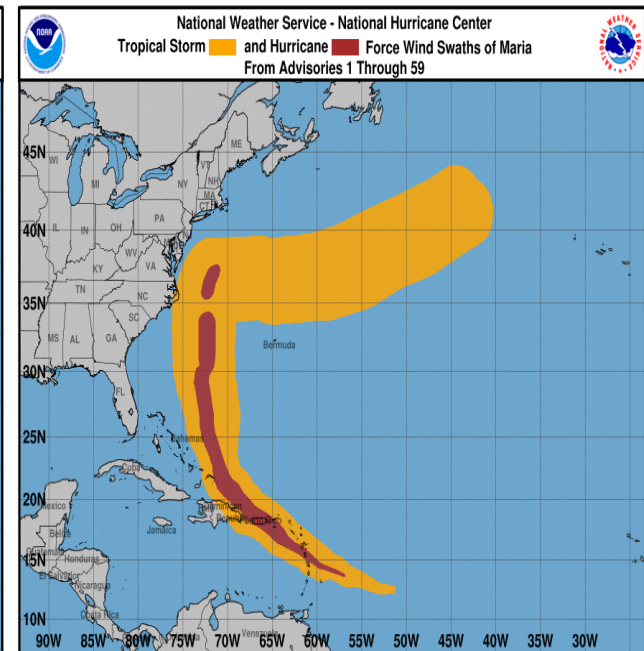
# Devastating Atlantic Hurricanes 2017



**Harvey**  
**CAT 4**  
**Aug 17 – Aug 31**



**Irma**  
**CAT 5**  
**Aug 30 - Sep 12**



**Maria**  
**CAT 5**  
**Sep 16 – Sep 30**

*Source: Dates from NOAA*

# H-IRMA

## *FLORIDA CONDITIONS*





NAPLES DAMAGE





FL KEYS - DAMAGE





FLIKEYS - DAMAGE







KEY WEST – TEMP TOWER

# H-MARIA





# H-MARIA

## *SAN JUAN CONDITIONS*

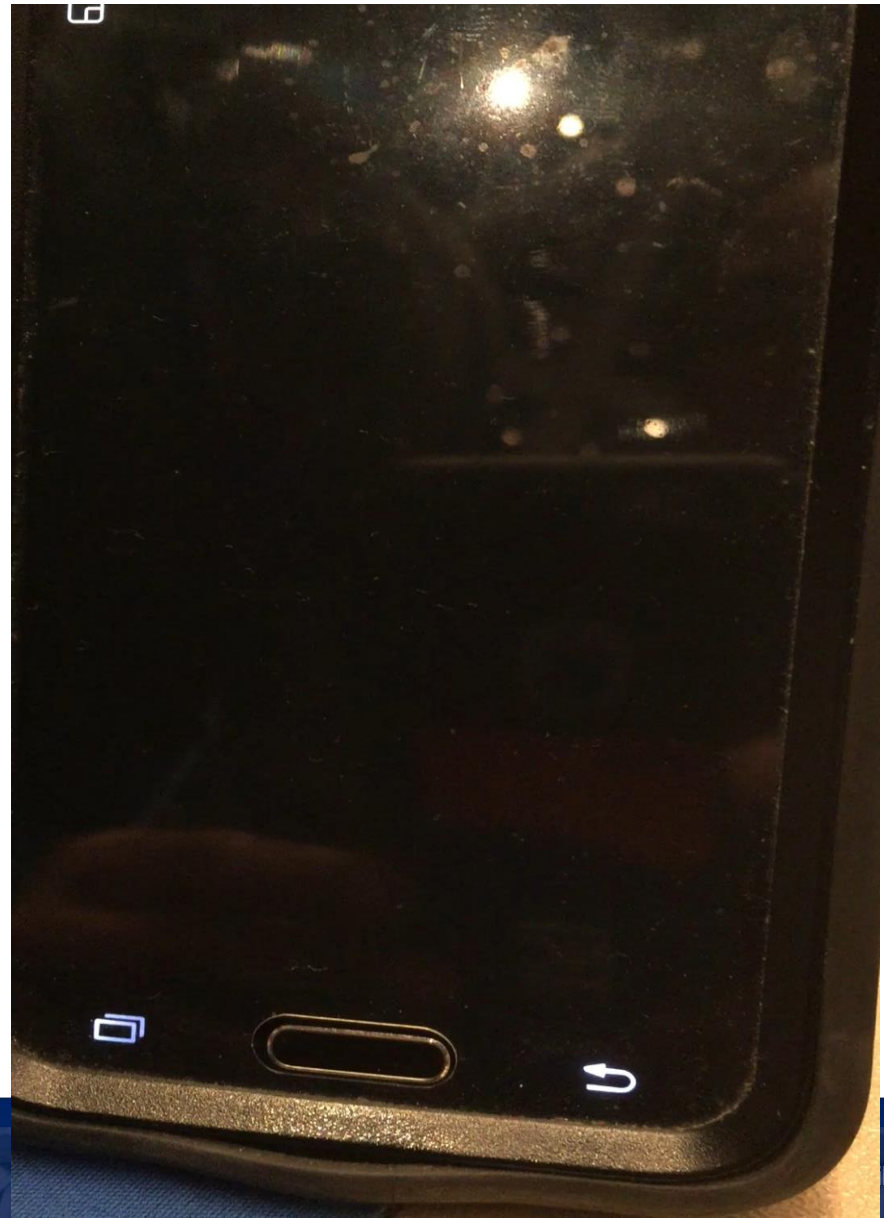




# H-MARIA

## THE DISASTER THAT KEPT COMING

- Total Power Outages
- Total Communication Outages
- Total Airport Outage (but Quick Reaction)
- Increasing Road/Bridge Outages
- Isolated Communities
- Cascading Problems
- Water Treatment
- Struggles with Situational Awareness





SJU – DAMAGE/DEBRIS



## PUERTO RICO - SURVIVORS





SJU – NEAR CONDADO







PR – UTUADO BRIDGE







## Puerto Rico – ROAD FAILURES





PR BRIDGE LOSSES = ISOLATION

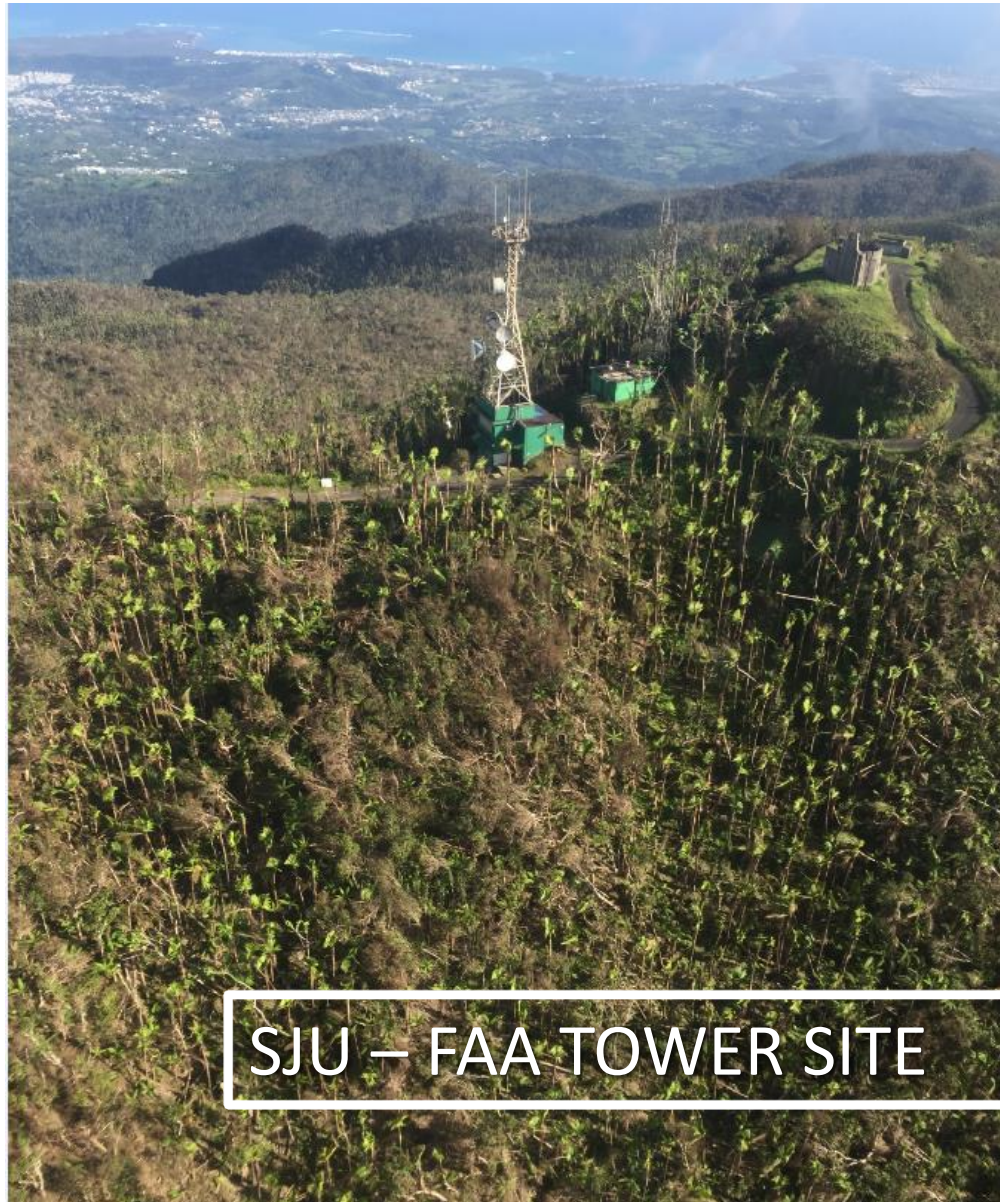




Barranquitas Carretera 143

PR - INCONCEIVABLE HAZARDS





SJU – FAA TOWER SITE





SJU – FAA RADAR SITE







## SJU – FUEL POD AIRLIFT



# Hurricane Maria



SJU – MOUNTAIN ROAD CONDITIONS

\*Information provided by External Affairs





# Yunque km 10.9 2/3/18

Saturday, February 3, 2018

2:07 PM

Slide got worse during construction. 75% of road is gone. Personel above were instructed to leave mountain at 1 pm. Closed to all traffic until further notice. Need plan/schedule from LPC to let FS know situation.



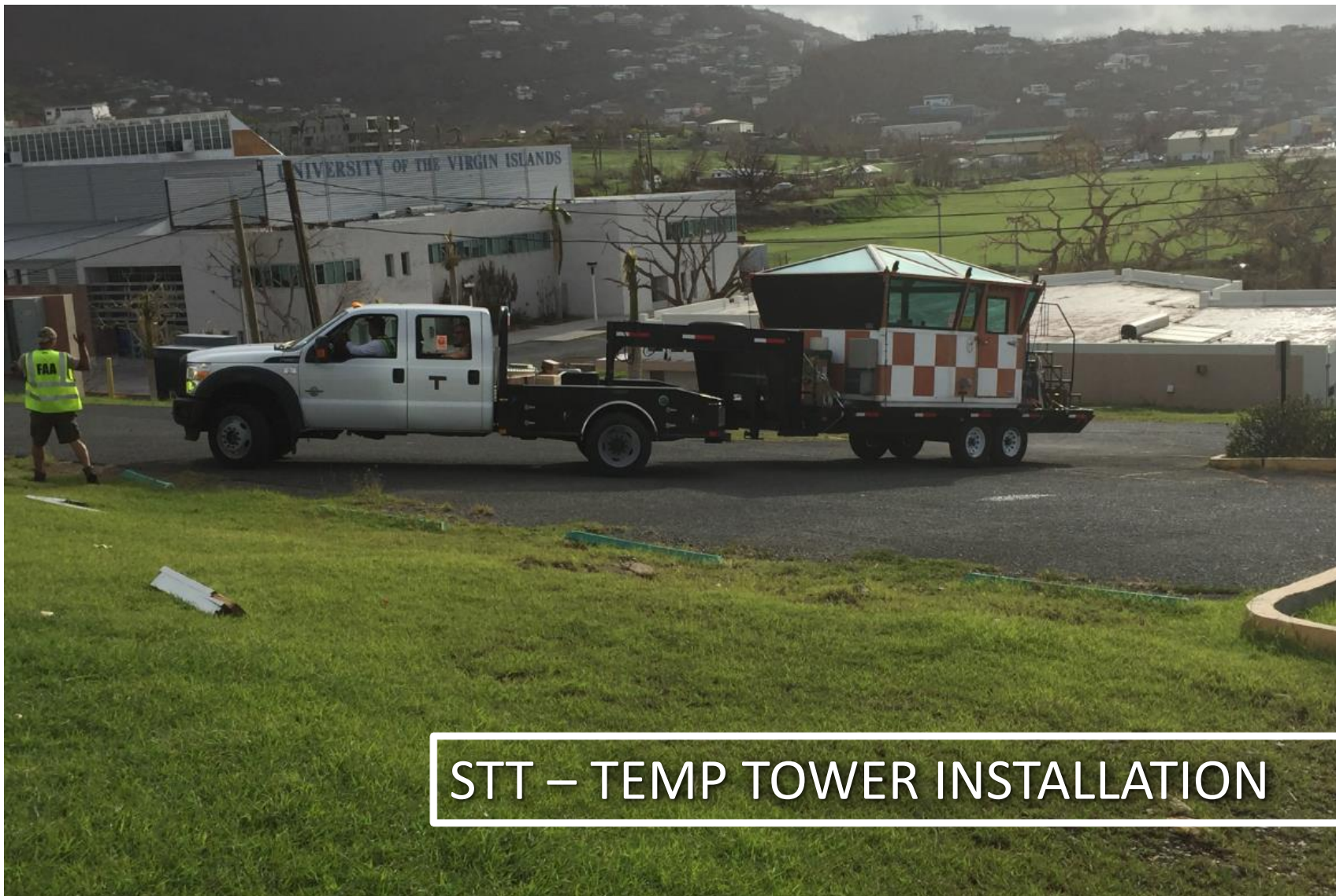
SJU - CONDITIONS WORSEN





# *U.S. VIRGIN ISLANDS*





## STT – TEMP TOWER INSTALLATION







STT – ATCT RECOMMISSIONED





## STT – TEMP TOWER OPERATIONS







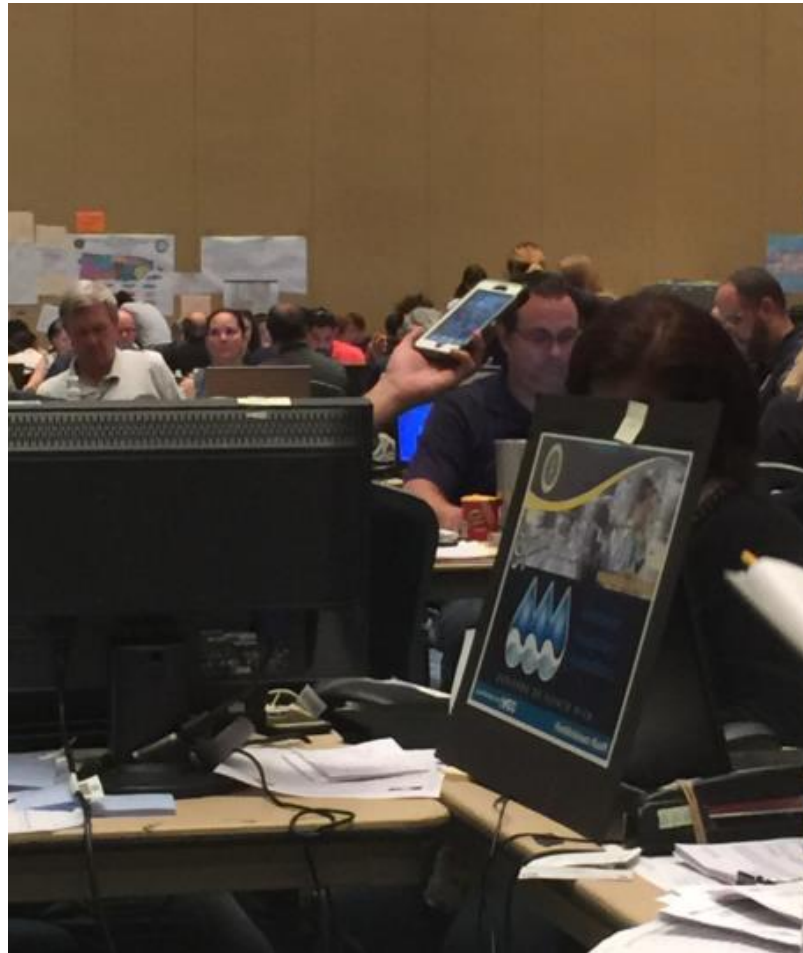


STT – EVACUATION FLIGHT





# FEMA JOINT FIELD OFFICE





## SJU – FEMA Joint Field Office





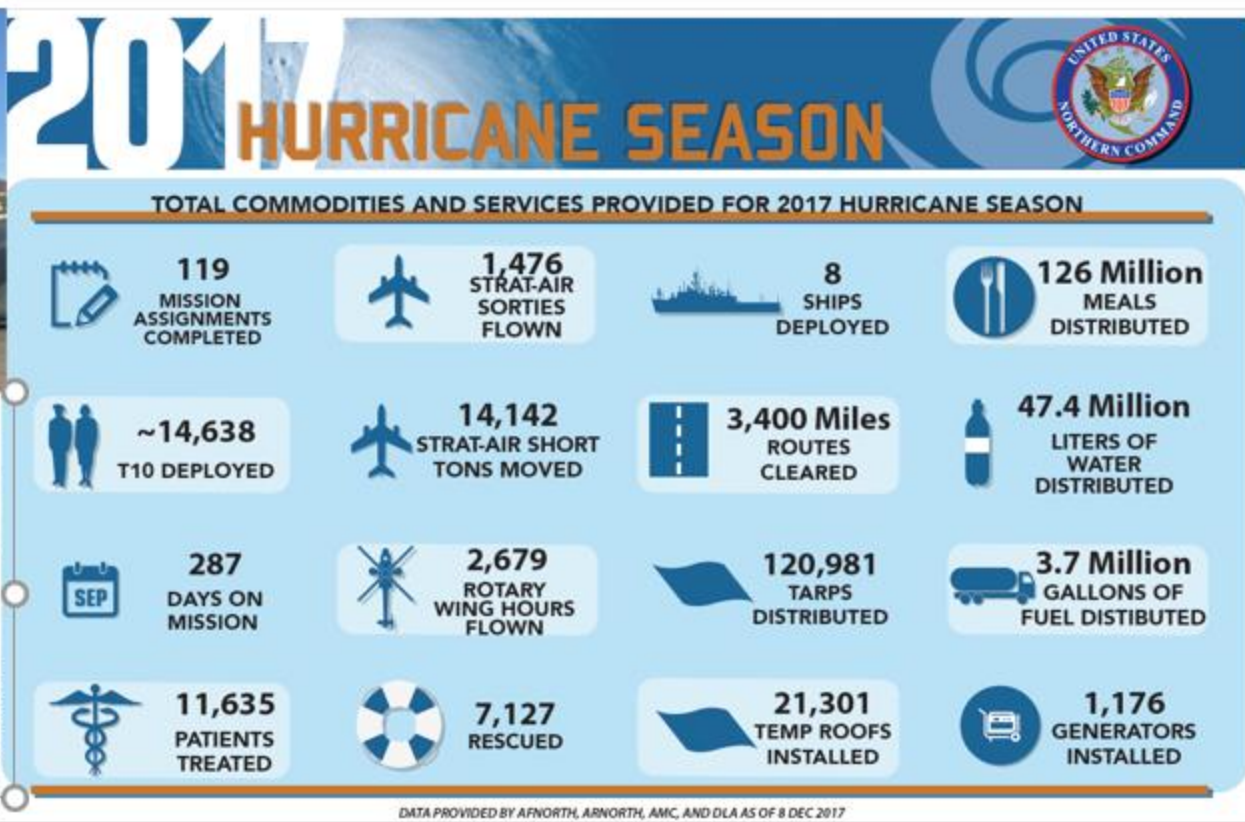


## SJU – FEMA Joint Field Office





# FEMA Military Operations for Hurricane Maria











# Specific Challenges

- NO COMMUNICATIONS
- NO POWER



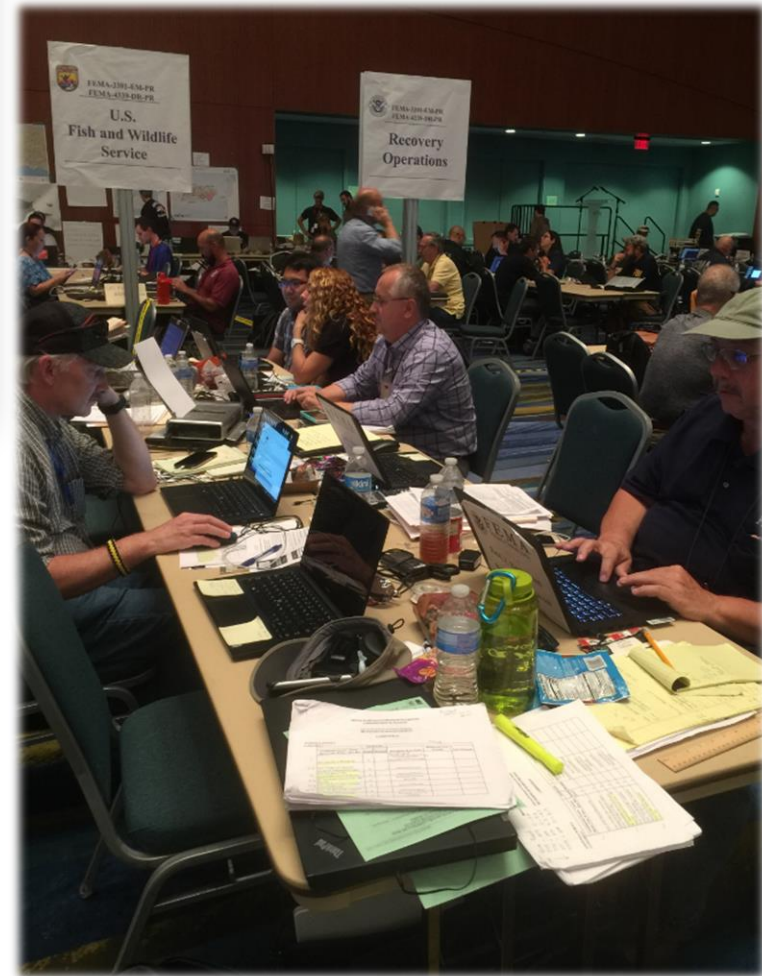
# Specific Challenges

- Round Peg, Square Hole
- Language Barrier
- Political Differences
- Communication with Commonwealth
- No Contact with Mayors of Municipalities
- Not Utilizing EMAC











# Roads and Bridges

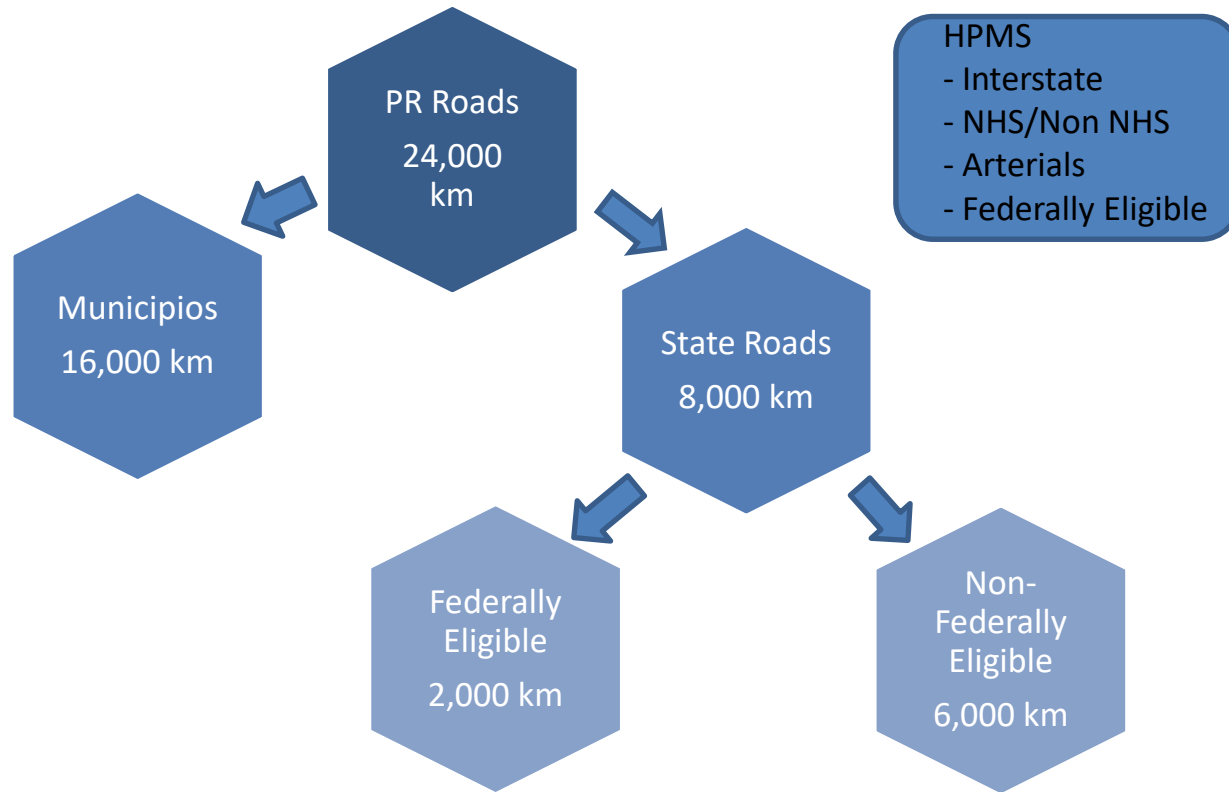
# Roads/Bridges

- Rainy Season
- Common Operating Picture for what constituted an “open road”
- Common Mapping
- Debris Collection Off Bridges
- Prioritized Bridges
- More time with PREMA
- Road Project funding splits





# Roads in Puerto Rico

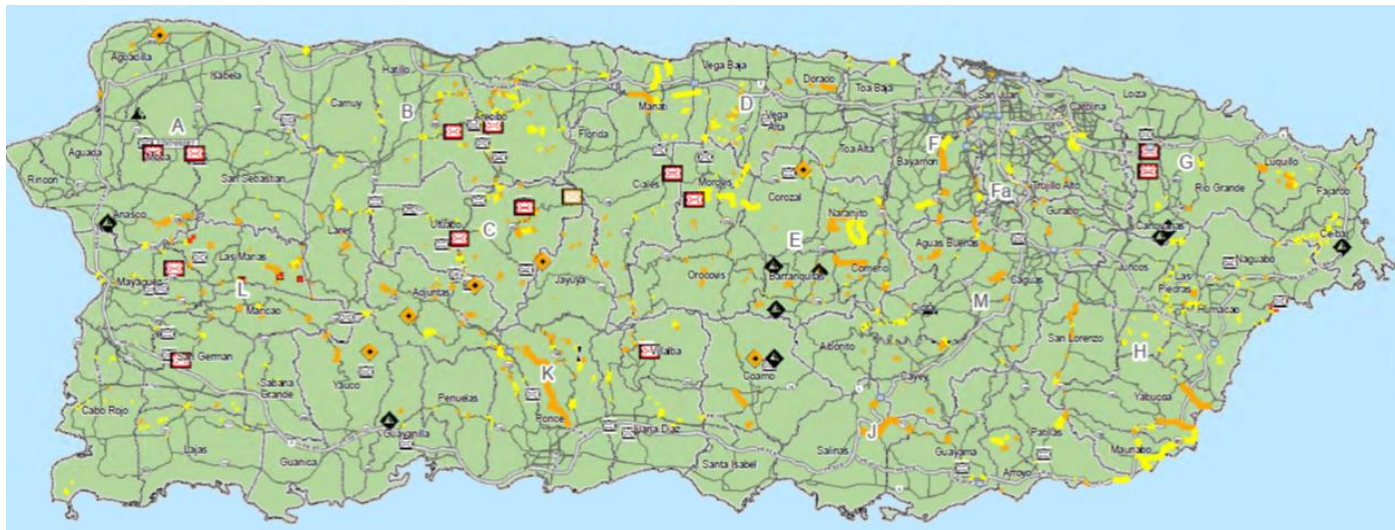


# National Highways





# All Roads in PR



March 1, 2018

U.S. Department of Transportation  
Office of Intelligence, Security, and Emergency Response - National Response Program

46

April 4, 2018

## North West Elevation

☀ 137°SE (T) ● 18.296549, -66.459403 ±9m ▲ 32 m



27 Feb 2018, 13:39:53





# Road Project Funding



March 1, 2018

# Eastern Federal Lands

- ESF-1 Coordinated to provide weekly Status Updates on EFL Projects
- Work consisted of 74 individual sites on 14 contracts.
- EFL is wrapping up the last project.
- Will begin A/E work on Permanent FEMA-funded repair projects.





# Maritime

# Maritime

- Safe Store - in Charleston, SC
- Hotel Lodging - Use of Training Ships for Berthing Responders
- Berthing ship also moved equipment
- Challenges in PR: Supply Chain Management and Coordination
- Port Workers were survivors too!
- FEMA needs a more comprehensive Pre- and Post- Storm Port Plan

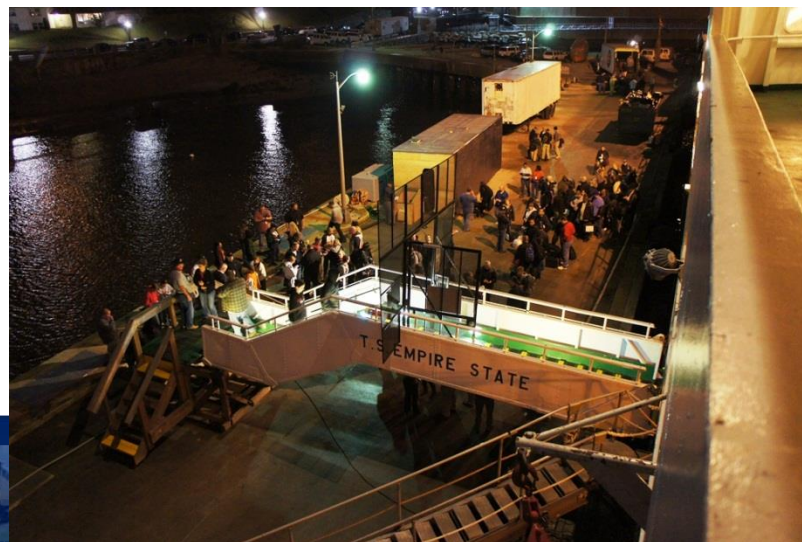




# USDOT Maritime Administration Training Vessel



# Typical gangway (ship access)





# Ship's Laundry Facilities



# Television



TV Lounge on TS Kennedy



Mess Deck on the TS Empire State



Mess Deck on the SS Wright





# Typical Sleeping Quarters





# Maritime Administration (MARAD)

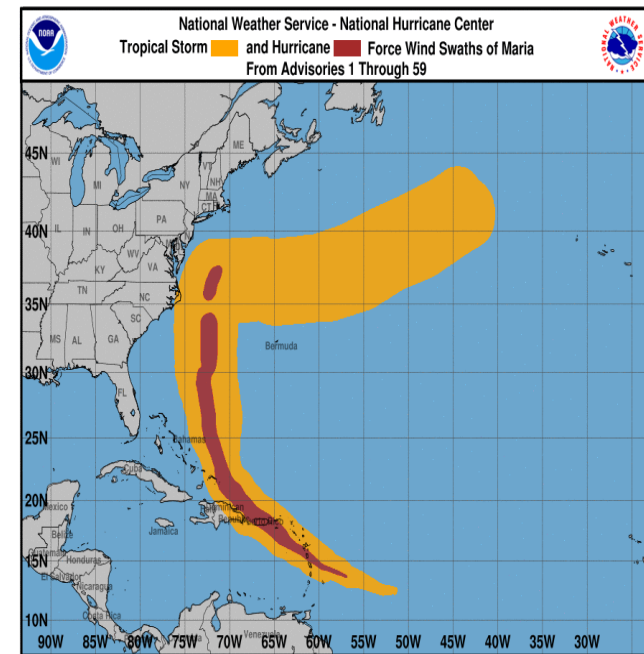




# Aviation - Related

# Hurricane Maria

- Airspace Coordination Areas (ACA): **2**
- Temporary Flight Restrictions (TFR): **1**
- Special Advisory Notices to Airmen (NOTAM): **13**
- Unmanned Aircraft System Special Governmental Initiatives (aka eCOA): **16**







# HURRICANE AAR

- AIRPORT ATC AND GROUND HANDLING CAPACITY AND CONTINGENCY RAMP SPACE
- OVERCOMING EXTENSIVE INFRASTRUCTURE DAMAGE TO ANS TELECOM AND ATC FREQUENCY OUTAGES
- CONFUSION ON CRITERIA FOR HUMANITARIAN FLIGHT STATUS
- IMPROVED SYNC WITH FEMA REGARDING FEMA PRIORITIES IN COMMONWEALTH AND TERRITORIES





# Special Governmental Initiatives

- FAA has established a new portal for requests for Special Governmental Interest (SGI) expedited UAS authorizations and waivers  
[https://www.faa.gov/uas/getting\\_started/emergency\\_approval/](https://www.faa.gov/uas/getting_started/emergency_approval/)
- The agency can quickly enable BVLOS and nighttime operations through this SGI process



# Other Lessons Learned

- Preposition TSA, CBP to quickly return in support of humanitarian flights.
- Utilize Voluntary Agencies to start coordination of donated goods, not ESF-1
- Preposition Security (FPS) for critical transportation infrastructure
- Have a notional start time for responding to non-conus incidents
- Better procedures for accounting for and support of DOT personnel





# Readiness check

- Understand your potential role/responsibility in
  - Evacuation
  - Support of Emergency Operations
  - Documenting your expenses during emergencies
- Have a ZERO START communications plan for emergencies
  - What if you cannot reach teams?
- Know your Emergency Management Community well
- Familiarize yourself with the Stafford Act and PAPPG



# 44CFR 206.225 – Emergency Work

- § 206.225 [Emergency work](#).
- (a)*General*.
- (1) Emergency protective measures to save lives, to protect public health and safety, and to protect [improved property](#) are eligible.
- (2) In determining whether [emergency work](#) is required, the Regional Administrator may require certification by local State, and/or Federal officials that a threat exists, including identification and evaluation of the threat and recommendations of the [emergency work](#) necessary to cope with the threat.
- (3) In order to be eligible, emergency protective measures must:
  - (i) Eliminate or lessen [immediate threats](#) to life, public health or safety; or
  - (ii) Eliminate or lessen [immediate threats](#) of significant additional damage to improved public or private property through measures which are cost effective.
- (b)*Emergency access*. (c)*Emergency communications*. (d)*Emergency public transportation*.





# Contact Information

[Leah.Russell@faa.gov](mailto:Leah.Russell@faa.gov) (Presenter)

National Response Program

Regional Emergency Transportation Representative— Region 4

Cell: (404) 909-6700

[Michael.Matthews@dot.gov](mailto:Michael.Matthews@dot.gov)

National Response Program

Regional Emergency Transportation Representative – Region 9N

Cell: 202-868-3905

[Kristan.Herricks@dot.gov](mailto:Kristan.Herricks@dot.gov)

National Response Program

Regional Emergency Transportation Representative – Region 9S

Cell: 949-307-1267

