



Image Source: Shutterstock Photo



Our Kids, Our Workforce, & Our Future!

Supporting Workforce Development Through Transportation Education

Joyce Gottlieb, NSTI Program Manager



U.S. Department
of Transportation

**Federal Highway
Administration**

OFFICE OF INNOVATIVE PROGRAM DELIVERY



Center for Transportation Workforce Development Team

- **Virginia Tsu** – Center for Transportation Workforce Development, Director
- **Yolonda Jordan** - National Summer Transportation Institute & OJT Supportive Services
- **Michael Caliendo** – OJT Supportive Services
- **Clark Martin** - Regional Transportation Workforce Centers
- **Ewa Flom** - Dwight David Eisenhower Transportation Fellowship

Garrett A. Morgan Transportation & Technology Education Program

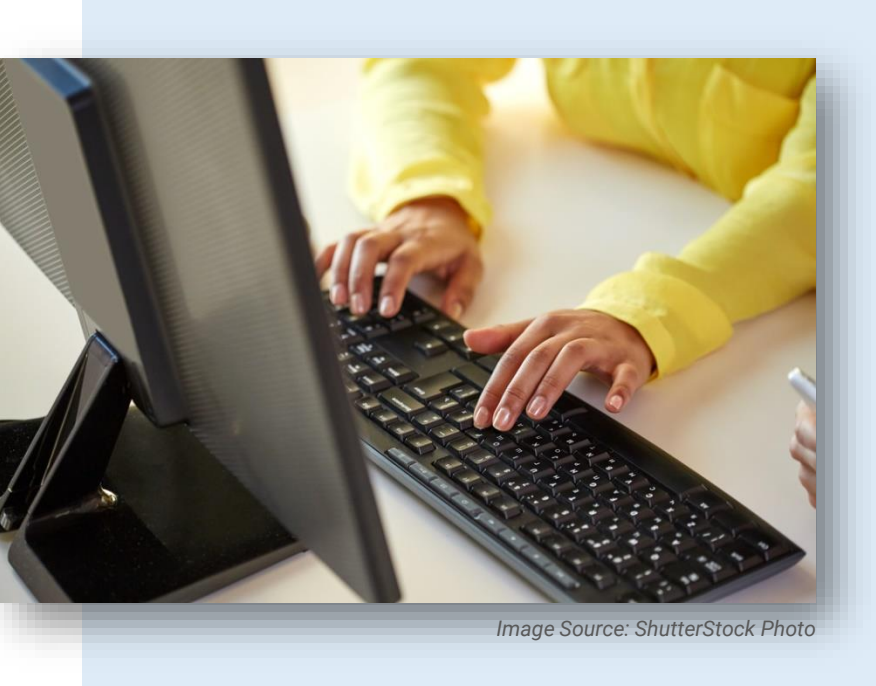
- **Joyce Gottlieb** – National Summer Transportation Institute

National Summer Transportation Institute



- Purpose
- Stakeholders
- Statement of Work Program Requirements
- **Student Exchange Program (S.E.P.)**
- Deliverables
- Challenges
- Best Practices

Learning Outcomes



- At the end of this lesson, you will be able to:
 - Explain the purpose of the NSTI
 - **Student Exchange Program**
 - List 2 stakeholders
 - State 3 program requirements (SOW)
 - Identify 2 deliverables
 - Identify a challenge and a best practice

Purpose



Image Source: Shutterstock Photo

- Promotes the *Science Technology Engineering and Mathematics (STEM)* disciplines within transportation
- Provide career opportunities among middle/high school students; including at-risk youth
- Provides pathway for careers in transportation

Stakeholders



Image Source: Shutterstock Photo

- FHWA Division Offices
- State Departments of Transportation
- Departments of Public Work
- Accredited colleges/universities
 - Federal Aviation Administration
 - The National Flight Academy

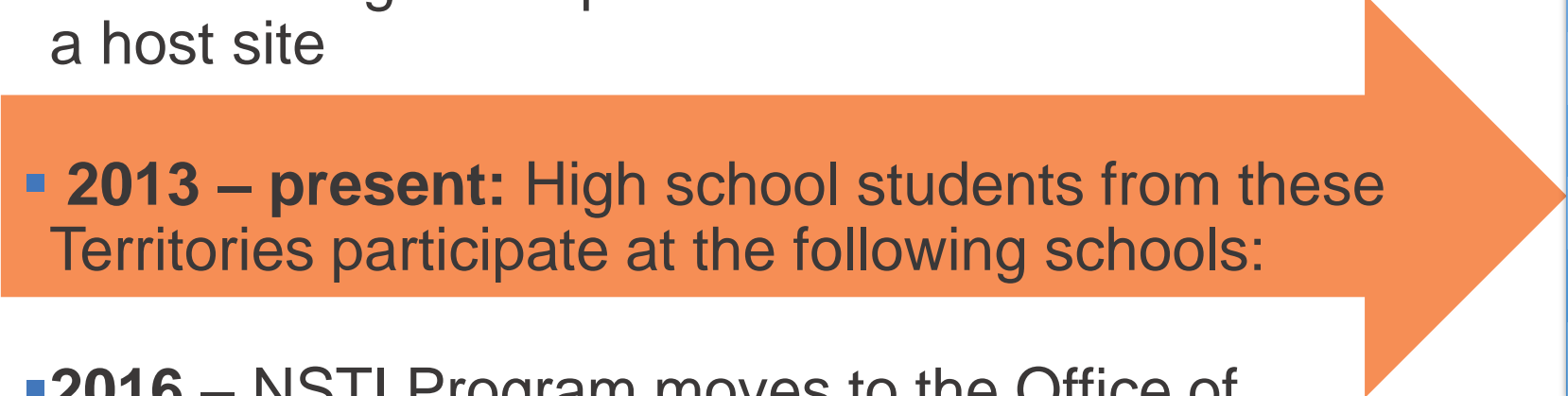


Statement of Work Program Requirements

- Recruitment and student selection procedures
- Staffing requirements
- Budget
- Inter-modal advisory committee
- Specific-named partners
- Implementation schedule
- Program curriculum
- Follow up survey of students

Student Exchange Program

- **2011** – Headquarters Office of Civil Rights pilots S.E.P. for American Samoa, Northern Mariana Islands and Guam
- **2012** – Program expanded to establish Guam as a host site
- **2013 – present:** High school students from these Territories participate at the following schools:
- **2016** – NSTI Program moves to the Office of Innovative Program Delivery (HIN)



University of Vermont
Univ. of New Mexico
Alcorn State, MS
Kentucky State Univ
Merrimack College, MA
Virginia State University

Student Exchange Program – How it Works



Image Source: Shutterstock Photo

- Host site selection
- Estimated budget submittal
- HIN approval
- Funding allocation
- Student selection
- Kick-off teleconference
- Coordination process

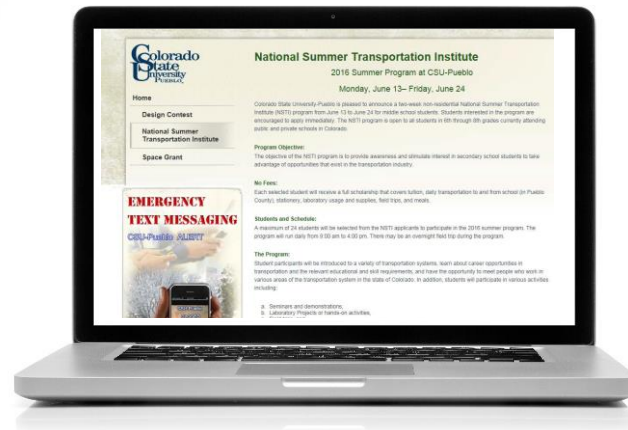


Deliverables

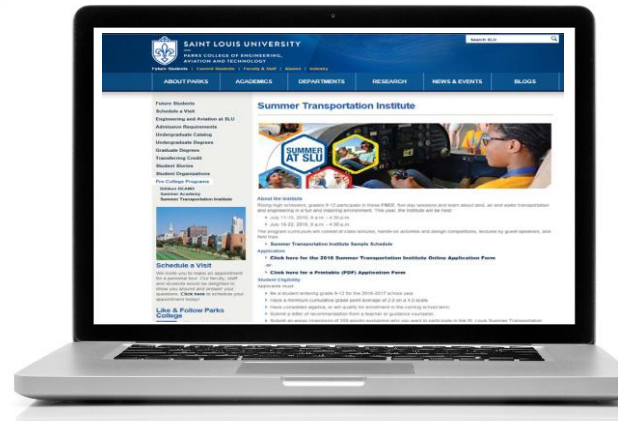
- Call-for-SOWs – HIN
- Anticipated fund allocations – HIN
- SOWs (recommended/non-recommended due to Division by deadline) – SDOT/DPW
- Submittals posted to SharePoint – Division
 - Letter of Intent to Approve
 - Recommended (SOWs/Excel budget)
 - Non-recommended

NSTI Program Showcased on Participating School Websites

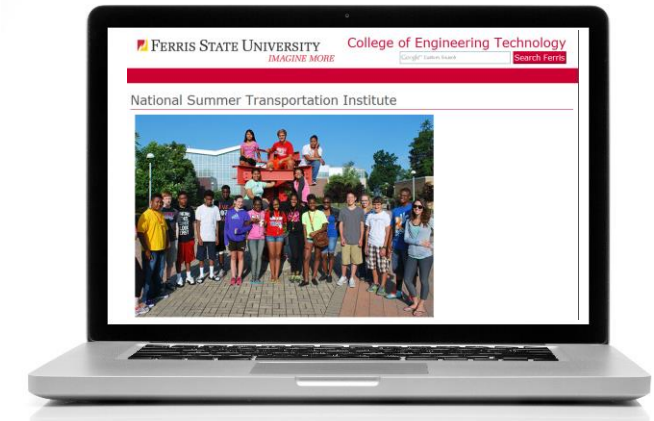
Colorado State University



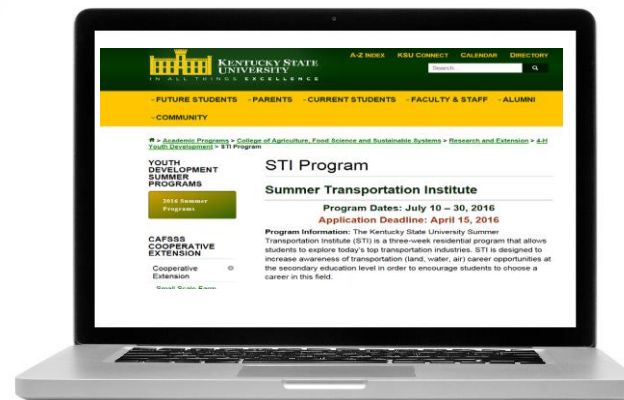
St. Louis University



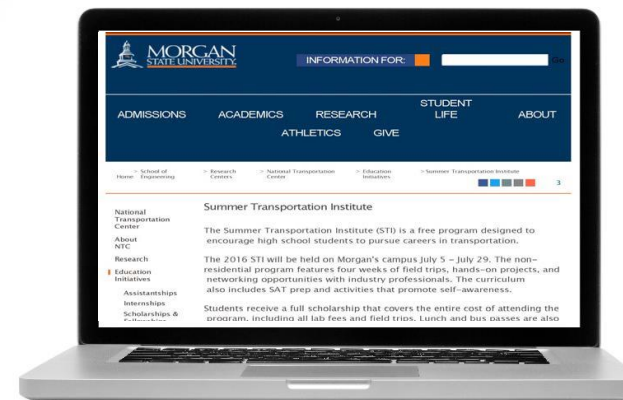
Ferris State University



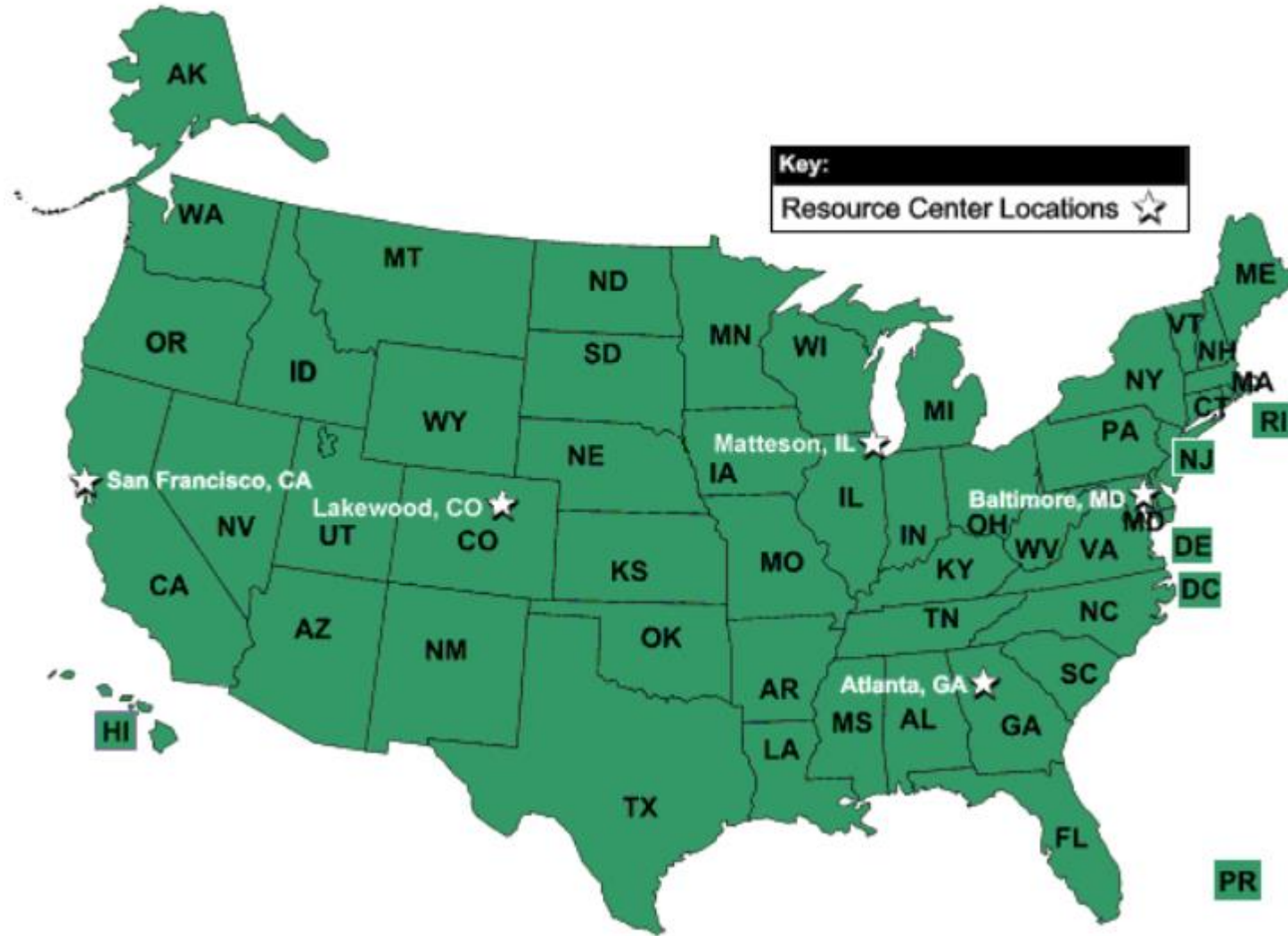
Kentucky State University



Morgan State University



NSTI Locations



Challenges

- Statements-of-Work (budget)
- Significant classroom time:
 - Curriculum Instruction
 - Experiential Learning
 - Presentations
- Project closeout
- Program survey



Image Source: Shutterstock Photo

Best Practices



- All stakeholders participate in the SOW Process
- Panel review process
- Leverage Partnerships
- Conduct onsite visits/SOW
- OJT/SS funds to boost overall funding



In Closing...

- Attract and retain middle/high school students into the transportation industry
 - Minority females, at-risk & underrepresented youth
- Develop an innovative program
- Encourage collaboration
- Establish long term partnerships



Image Source: Shutterstock Photo



Review



Image Source: Shutterstock Photo

- Explain the purpose of the NSTI
 - **Student Exchange Program**
- List 2 stakeholders
- State 3 program requirements (SOW)
- Identify 2 deliverables
- List a challenges and a best practice



Questions???



Thank You!



Joyce Gottlieb

NSTI Program Manager

PH: 202-366-9495

joyce.gottlieb@dot.gov

Center for Transportation Workforce Development

Office of Innovative Program Delivery (HIN) Federal Highway Administration

