



UPR/MIT/TU Professional Development Program
Transportation Technology Transfer Center
University of Puerto Rico at Mayagüez
Mayagüez, P.R.



Executive Summary

Tren Urbano “Cupey Station” Instrument of Urban Redevelopment

by

Norberto Guzmán Torres
e-mail:norbertoguzman@hotmail.com
School of Architecture
University of Puerto Rico

Advisor
Prof. Esteban Senneyey
e-mail:elsennyey@usa.net

Executive Summary

The alignment of the Tren Urbano has the potential to become the new urban center of the Metropolitan Area. This new transportation system generates new uses, higher density and an increase of the land value. The Tren Urbano offers an opportunity to redevelop and connect the city, not just as a transportation vehicle but also as an instrument of urban redevelopment.

The purpose of my thesis is to study the Cupey Station of Tren Urbano and it's surroundings. To elaborate a program and design a structure of mix use, to complete the station and it's surroundings. This is one of the stations located in San Juan that has an enormous potential to encourage an intensive redevelopment in the area.

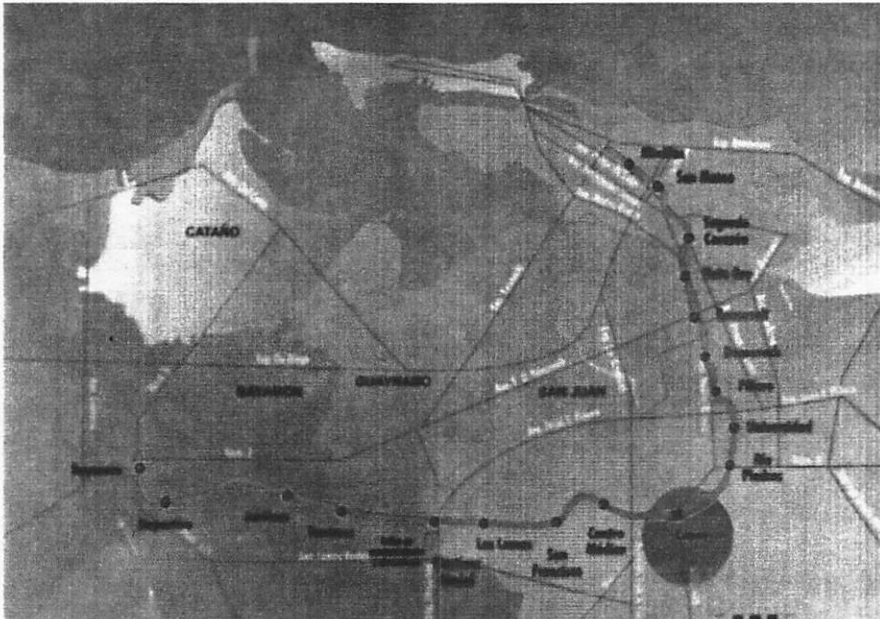


Figure 1. Location of Cupey along the alignment of Tren Urbano.

The Cupey station is located in one of the busiest intersections of the SJMA between PR-1 and PR-21, principal road to the south of San Juan and Caguas. The amount of usable land and the sub utilize infrastructure in the sector encourages the redevelopment of this area. The investigation of this thesis recommends a redevelopment of the Cupey's sector with a mix use development; housing, commercials, offices spaces and entertainment areas should be part of this new redevelopment.

The objectives of this work are:

- To complete the Tren Urbano Cupey Station with a commercial and entertainment area.
- Use this new commercial and entertainment area as a connecting element between the station, the nearby residential areas, the commercial sector to both sides of PR-1, the Metropolitan University and the Bosque Urbano (urban forest).
- Revitalize the pedestrian areas around the train station.
- Establish a pedestrian connection between both sides of PR-1, open to the general public.



Figure 2. Aerial photograph of Cupey.



Figure 3. Uses around Cupey Station.

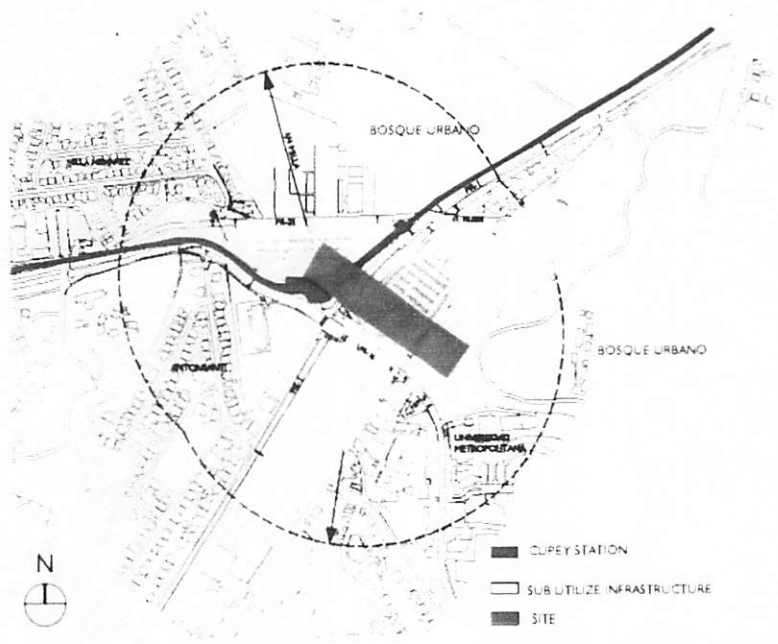
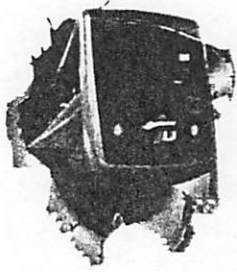


Figure 4. The propose site and the sub utilize infraestructure around the station.

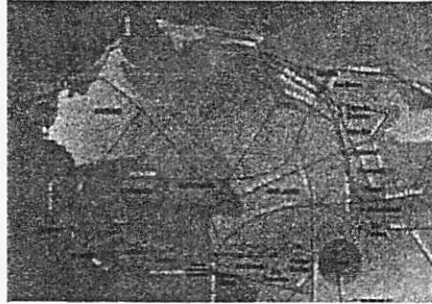


Cupey Station

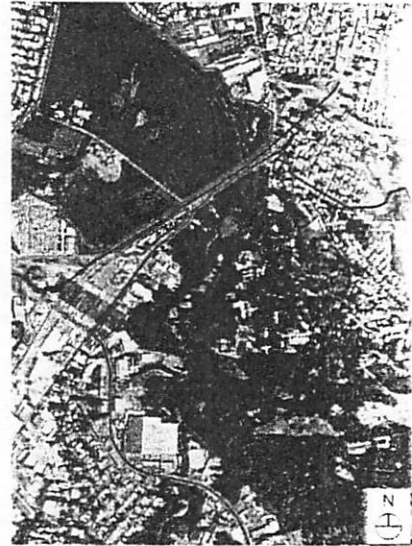
Instrument of Urban Redevelopment

Norberto Guzmán Torres UPR ARCHITECTURE
Arch. Esteban Sennyey

The purpose of my thesis is to study the Cupey Station of Tren Urbano and its surroundings. To elaborate a program and design a structure of mix use, to complete the station and its environment. This is one of the stations located in San Juan that has an enormous potential to encourage an intensive redevelopment in the area.



The alignment of the Tren Urbano has the potential to become the new urban center of the Metropolitan Area. This new transportation system generates new uses, higher density and an increase of the land value. The Tren Urbano offers an opportunity to redevelop and connect the city, not just as a transportation vehicle but also as an instrument of urban redevelopment.



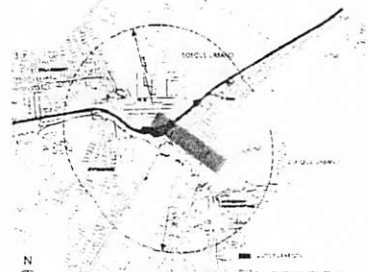
Cupey Station is located in one of the busiest intersections of the SJMA between PR-1 and PR-21, principal road to the south of San Juan and Caguas. The amount of usable land and the sub utilize infrastructure in the sector encourages the redevelopment of this area. The investigation of this thesis recommends a redevelopment of the Cupey's sector with a mix use development; housing, commercials, offices spaces and entertainment areas should be part of this new redevelopment.



Uses around Cupey Station.

The objectives of this work are:

1. To complete the Tren Urbano Cupey Station with a commercial and entertainment area.
2. Use this new commercial and entertainment area as a connecting element between the station, the nearby residential areas, the commercial sector to both sides of PR-1, the Metropolitan University and the Bosque Urbano (urban forest).
3. Revitalize the pedestrian areas around the train station.
4. Establish a pedestrian connection between both sides of PR-1, open to the general public.



The propose site and the sub utilize infrastructure.

Precedents



Passagen Houseveriet, Hamburg



Fullon Street Boston, Mass.



Miller Park Plaza
Chattanooga, Tennessee