

SYSTEM & TEST TRACK TURNKEY - STTT



By: Edgardo San Miguel, PE

SYSTEM & TEST TRACK TURNKEY

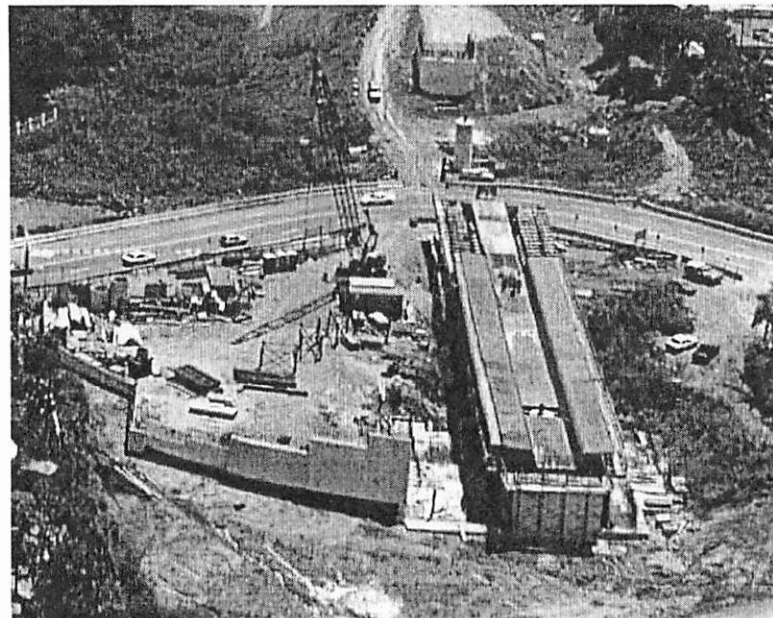
- Description:
 - The Project consist of the management and the administration of the design, manufacturing, supply, construction, installation, testing, acceptance, demonstration and completion of the *Fixed Facilities and Systems*.

SYSTEM & TEST TRACK TURNKEY

- Fixed Facilities
and Systems

SYSTEM & TEST TRACK TURNKEY

- Guideway
 - 2.6 km. of at-grade and aerial guideway.

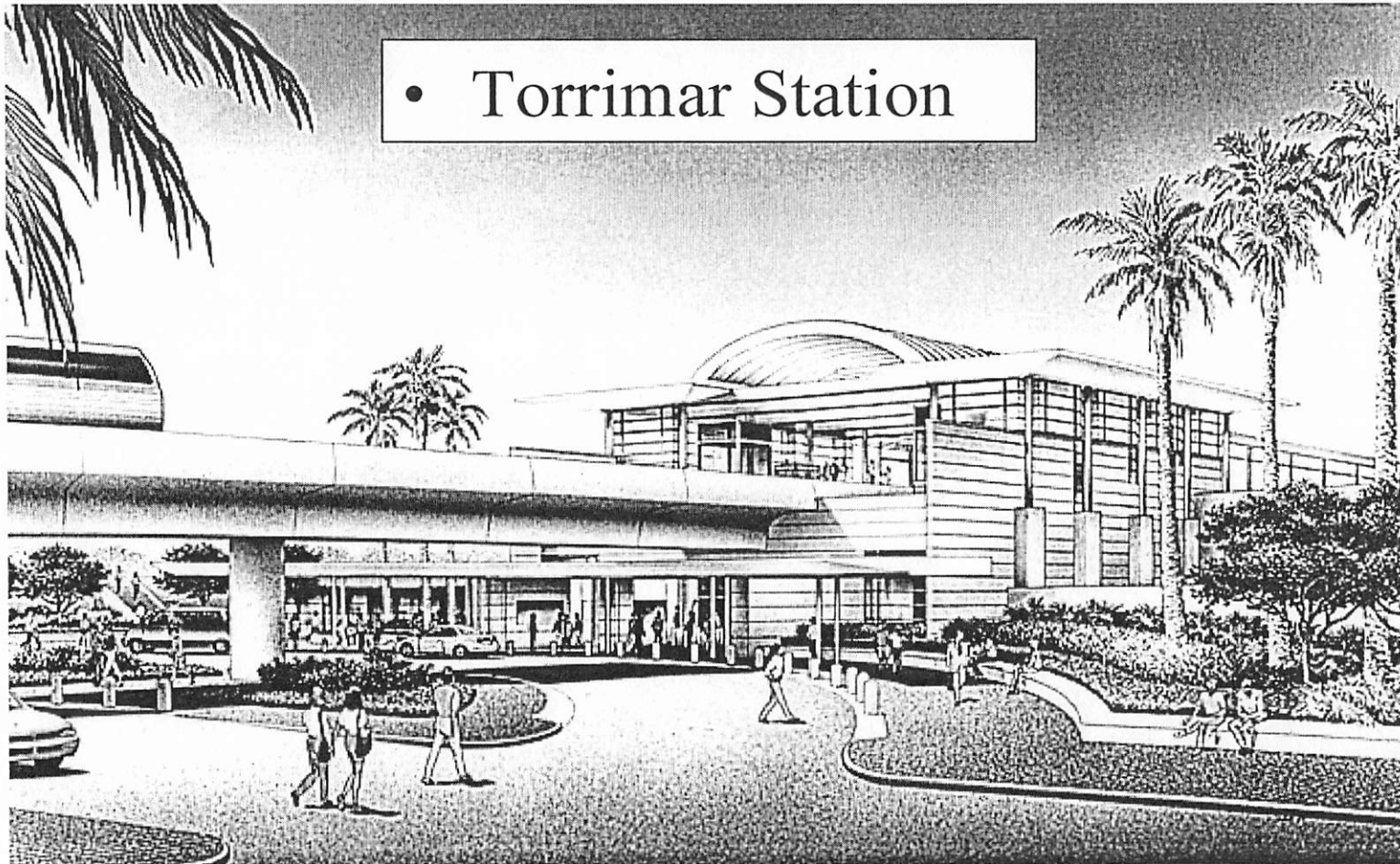


SYSTEM & TEST TRACK TURNKEY

- Stations:
 - There are two passenger stations in the alignment:
 - Martinez Nadal
 - Torrimar

SYSTEM & TEST TRACK TURNKEY

- Torrimar Station



SYSTEM & TEST TRACK TURNKEY

- Torrimar Station



SYSTEM & TEST TRACK TURNKEY

- Martinez Nadal Station



SYSTEM & TEST TRACK TURNKEY

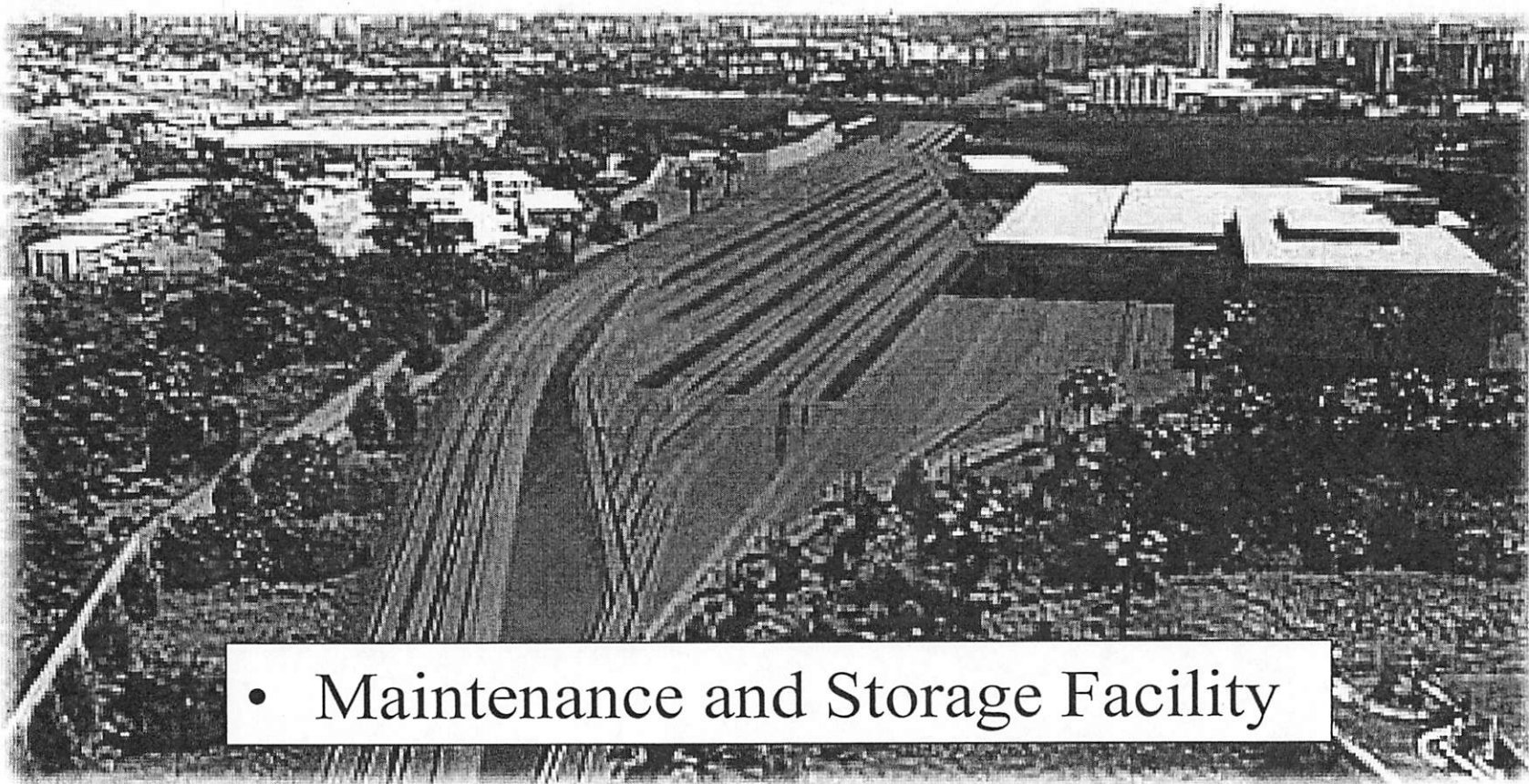
- Martinez Nadal Station



SYSTEM & TEST TRACK TURNKEY

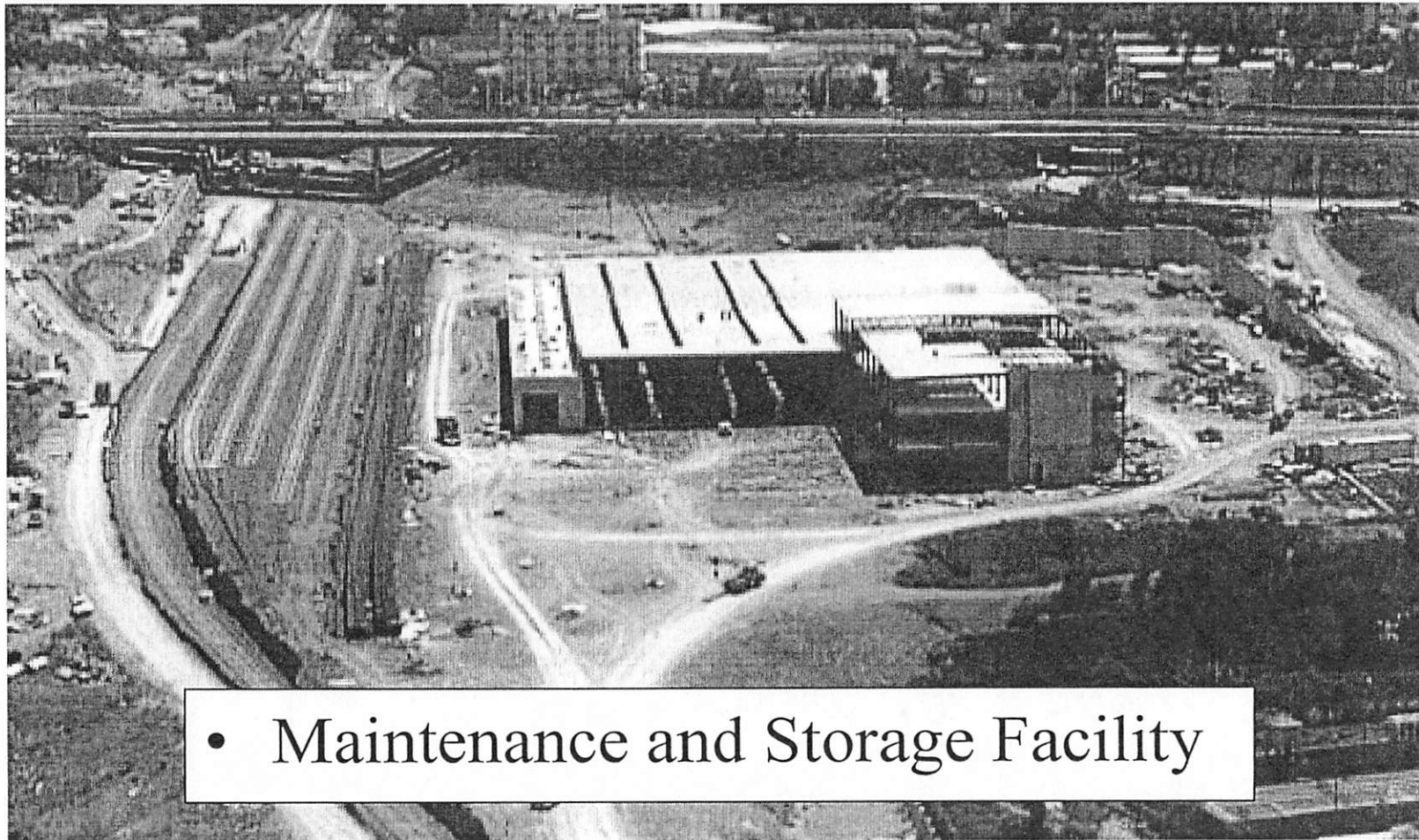
- Maintenance and Storage facilities
 - Includes:
 - Car Wash
 - Operation and Administration Building
 - Shop Area

SYSTEM & TEST TRACK TURNKEY



- Maintenance and Storage Facility

SYSTEM & TEST TRACK TURNKEY



- Maintenance and Storage Facility

SYSTEM & TEST TRACK TURNKEY

- Systems
 - Vehicules
 - Train Control
 - Comunciations
 - Operation Control Center
 - Power Distribution and Traction Power

SYSTEM & TEST TRACK TURNKEY

- Systems
 - Trackworks
 - Escalator and Elevators
 - Fair Collection
 - Signage and Graphics

- For Information about the different systems:
 - Train Control-Joe Cieleky
 - Email: jcieleky@metrolink.net
 - Communications-Ron Percy
 - Email: rpercy@metrolink.net
 - Operations Control Center-Vince Carrillo
 - Email: vcarrillo@metrolink.net
 - Power and Traction Power-Edgardo San Miguel
 - Email: esanmiguel@metrolink.net
 - Trackwork-Ron Perone
 - Email: rperone@metrolink.net

- Cont.

- Escalators and Elevators-Américo Gonzalez

- Email: agonzalez@monodrive.com

- Fair Collection/Signage and Graphics-Bernie Walker

- Email: berniewalker@fair.org