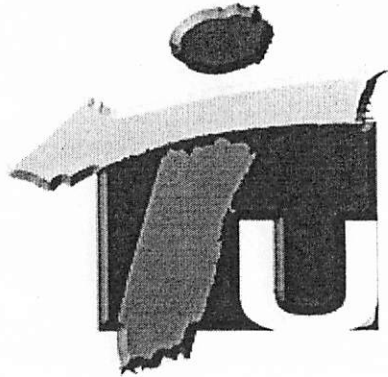


Hato Rey Alignment Section



TREN URBANO

Project Overview
January 18, 2000
José A. Figueroa, PE

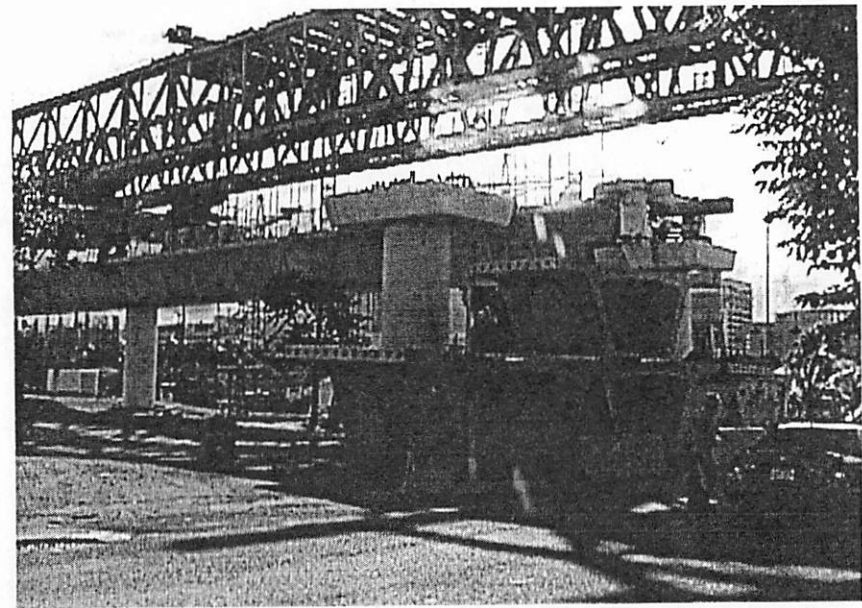
Hato Rey Alignment Section

- Hato Rey Alignment Section is a design and build contract
- The General Contractor is NECSO/Redondo



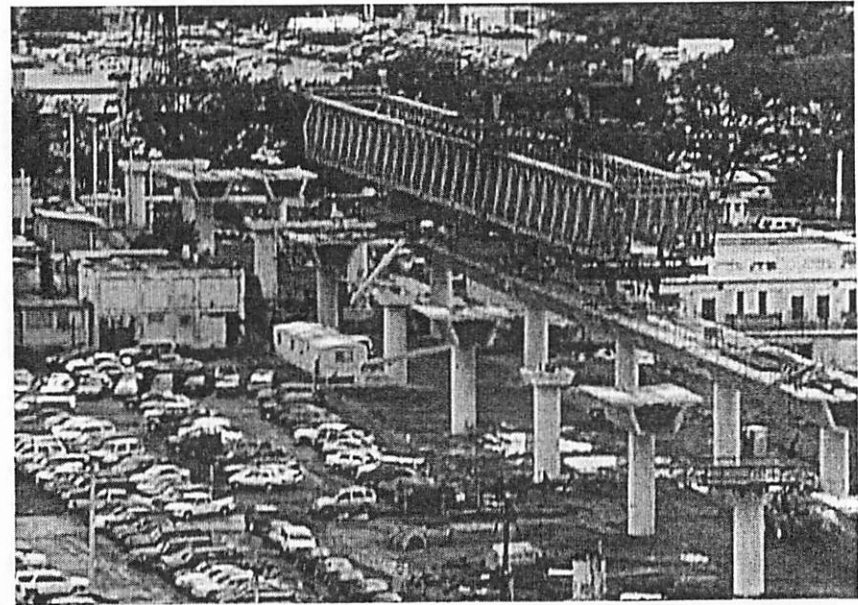
Hato Rey Alignment Section

- The Project consists of 3.6 Km of elevated guideway...and



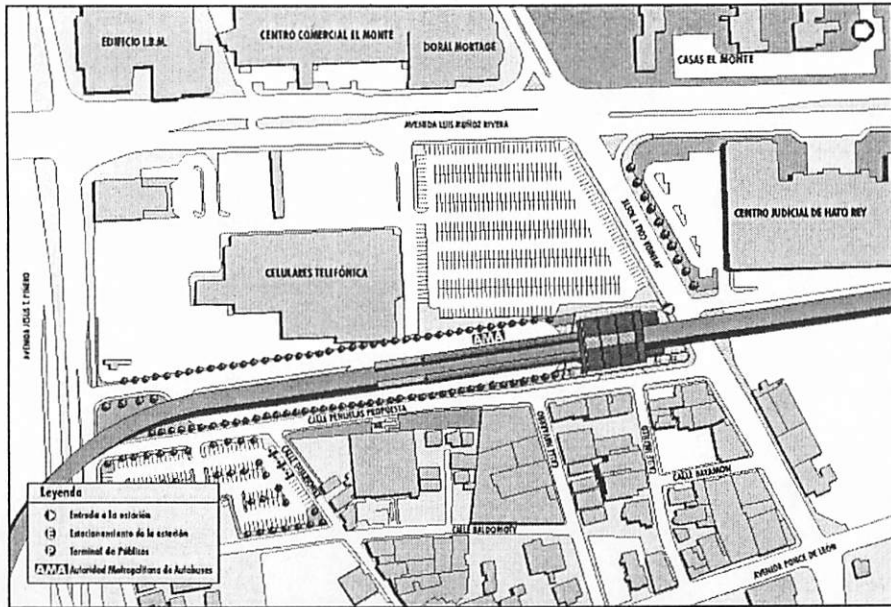
Hato Rey Alignment Section

- Also includes the construction of five (5) passenger stations

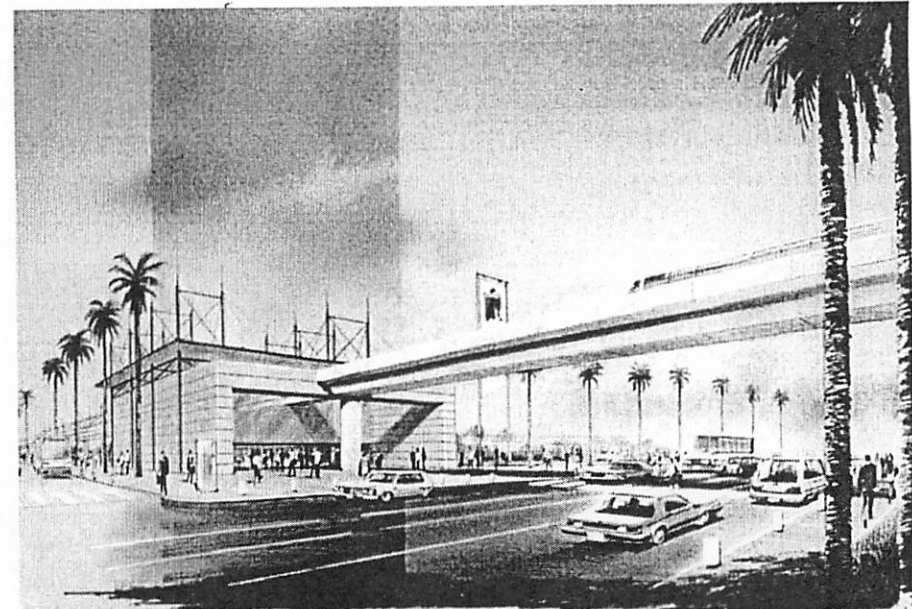


Hato Rey Alignment Section

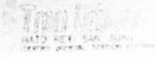
- Piñero Station



Estación Piñero Piñero Station

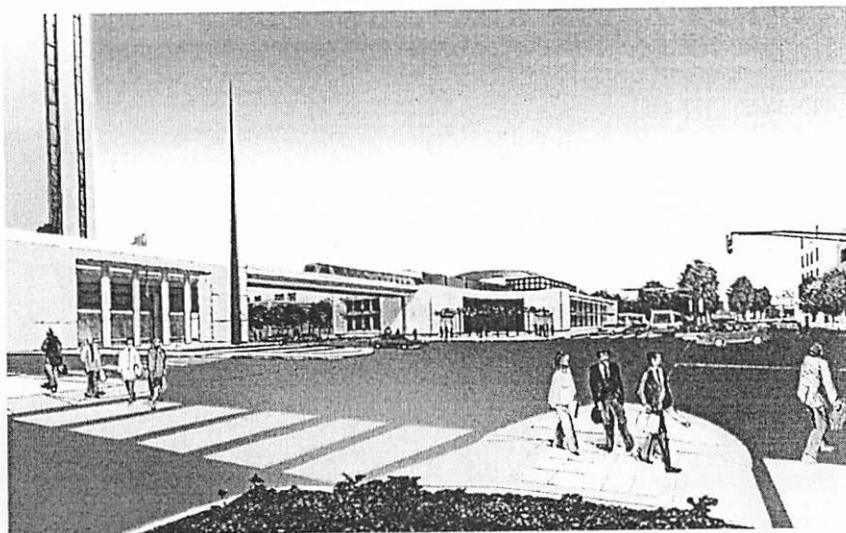
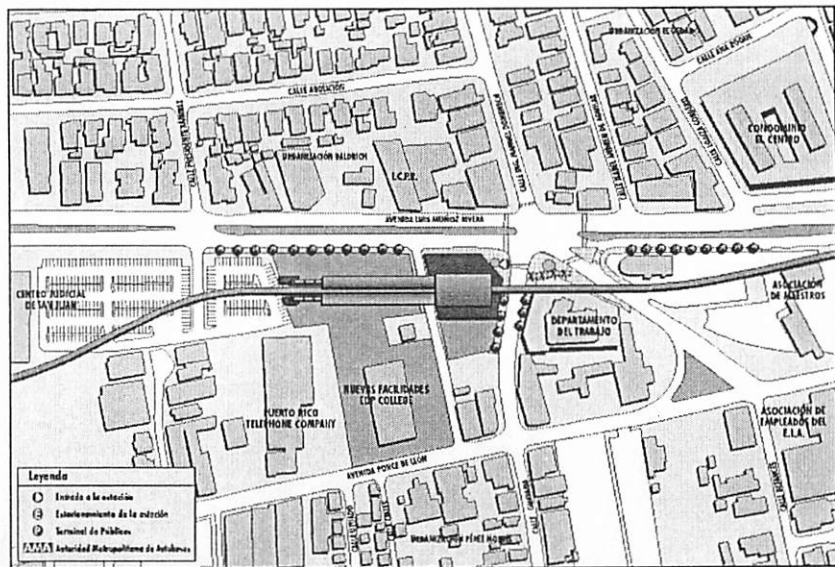


ALCANTARA Y TANGRAN, S.A.
CONSTRUCTORA



Hato Rey Alignment Section

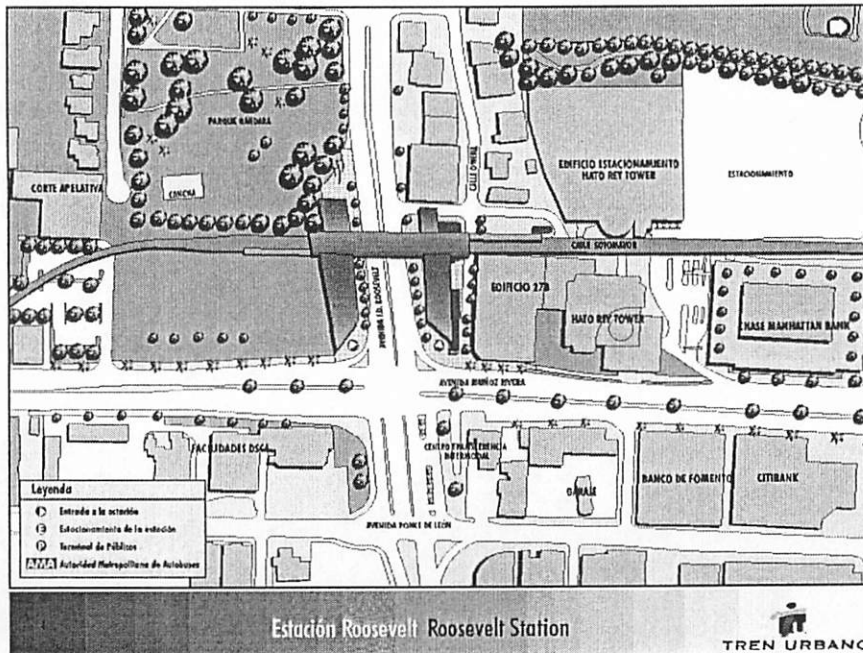
- Domenech Station



Estación Domenech Domenech Station

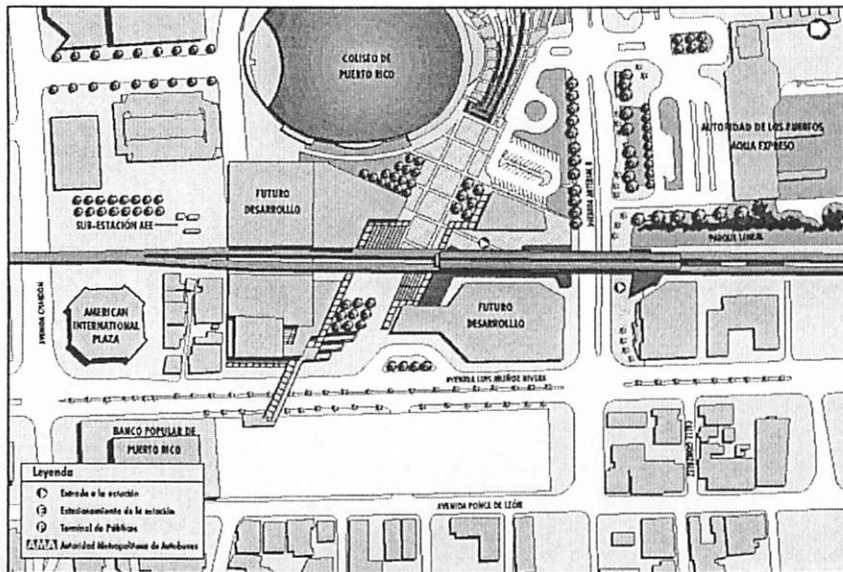
Hato Rey Alignment Section

- Roosevelt Station

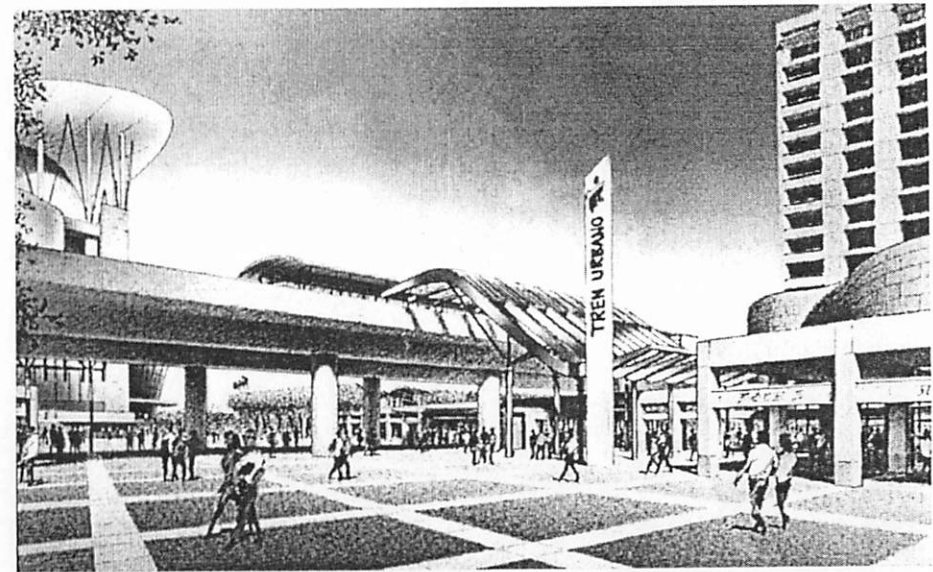


Hato Rey Alignment Section

- Hato Rey Station

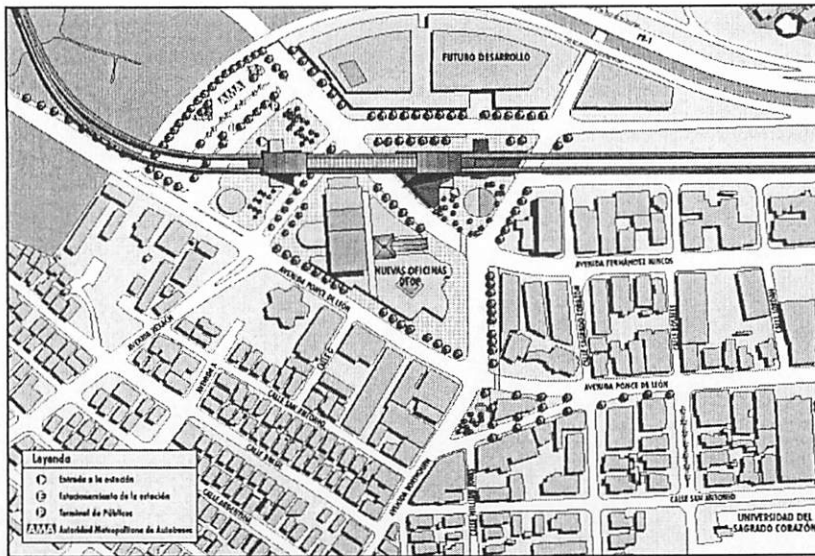


Estación Hato Rey Hato Rey Station

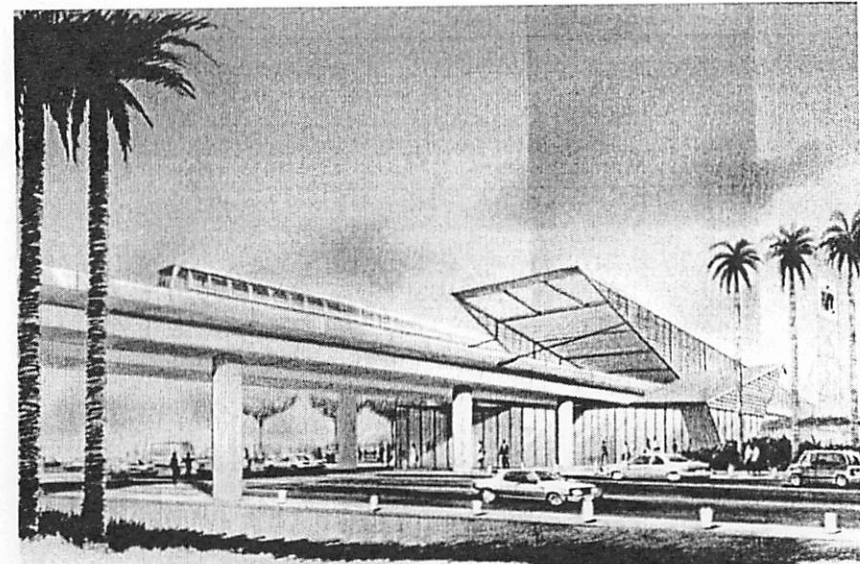


Hato Rey Alignment Section

- Sagrado Corazón Station



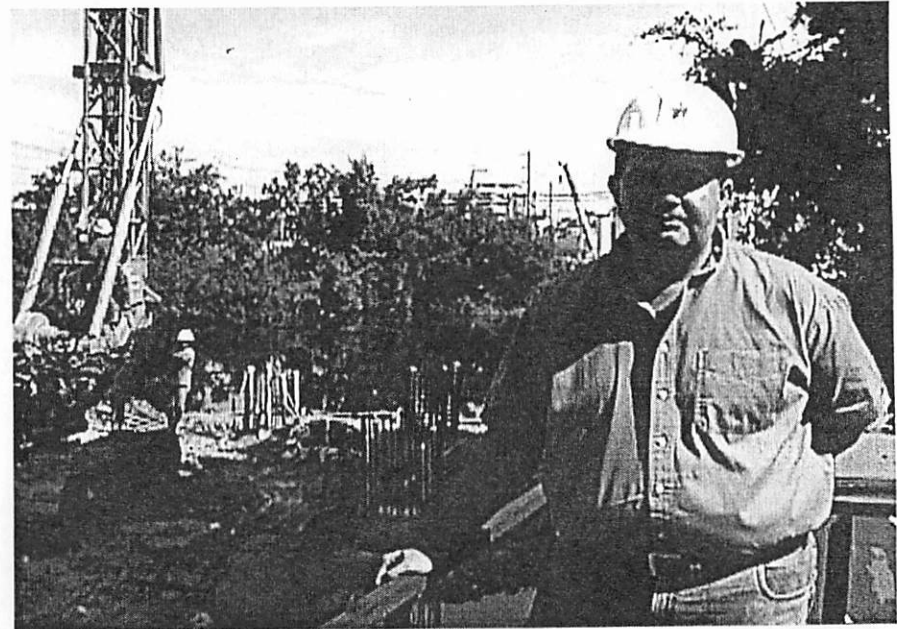
Estación Sagrado Corazón Sagrado Corazón Station



ALTO 1 TREN URBANO S.A.
ESTACIONES

Hato Rey Alignment Section

- My involvement is directly with the project construction part of the work



Hato Rey Alignment Section

- **The project construction includes the fabrication of:**
 - 2,540 piles (47 of them cast in place)
 - 174 pile caps (footings)
 - 174 piers (columns)
 - 158 spans (of which three of them are transition spans)
 - 2,801 segments (1,158 singles and 1,643 doubles)

Hato Rey Alignment Section

- The total cost of this section of the Tren Urbano Project is One Hundred Seventeen Millions Four Hundred Thousand Dollars (\$117,400,000.00)
- The original contract duration is scheduled to be One Thousand Three Hundred Eighty-Eight Days (1,388)
- This scheduled duration has not change

Hato Rey Alignment Section

- ***Project Progress and Total Completion at Present is 47.5 %***
- Design Completion = 70.0 %
- Guideway Construction Completion = 67.5 %
- Station Construction Completion = 5.0 %
- Utility Relocation Completion = 70.0 %

For information:

- José A. Figueroa, PE
 - Office (787) 751-6515
 - Fax. (787) 751-6477
 - Email jfigueroa@transportation.state.pr